



STZ-L | STZ-H »MPA«

SEMI LOWLOADERS



MADE FOR YOUR MISSION

OUR SEMI LOWLOADER CREATED TO MASTER CHALLENGES

Construction machinery, plant components, crane segments – just a small selection of what our forced-steering semi lowloaders of the STZ-L, STZ-H and »MPA« series move safely and reliably every day. No matter which load awaits, our vehicles master every challenge effortlessly.

PREPARED TO FACE EVERY TASK

06

Regardless of when you need a versatile vehicle, our STZ-L, STZ-H and »MPA« semi lowloaders are your first choice. With the same vehicle bodywork, different axle units can provide you with exactly what you require for your applications: low loading height, extraordinary axle compensation or maximum robustness.



STZ-L | »MPA« WITH WHEEL RECESS

FLEXIBILITY IS WHAT COUNTS

08

Our forced-steered wheel recessed vehicles are flexible workhorses in which you can individually utilize the loading area to also transport high loads with low overall heights. Extensive accessories and options round off the product range for these application-oriented and powerful helpers for everyday transport duties.



OUR MULTITALENT FOR EVERY LOAD

The semi lowloaders of the STZ-L, STZ-H and »MPA« series impress with their sophisticated axle technology and user-friendly operation. These economical vehicles enable you to be equipped for every challenge.



WHEEL RECESSED VEHICLES

Even more flexibility during transport:
Utilizing wheel recesses makes the use of the loading area even more flexible and your transport will become even more economical.

MORE REGARDING THE TYPE
STZ-L/»MPA«
WITH WHEEL RECESS

PAGE
06

MACPHERSON AXLE TECHNOLOGY »MPA«

The axle is extremely maintenance friendly due to the small number of components. In addition, it is designed for high payloads.

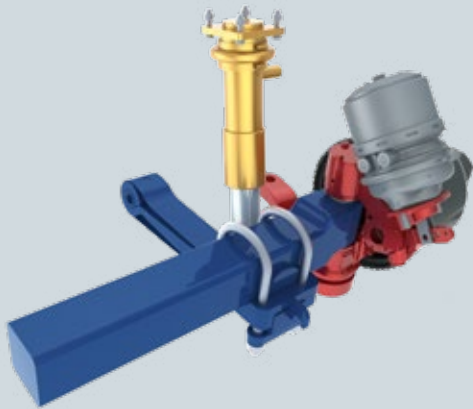
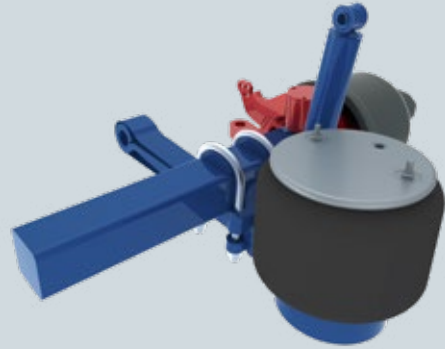
- » Maximum steering angle 60°
- » Axle stroke 350 mm
- » Loading height 785 mm



KNUCKLE TYPE STEERING AXLE AXLE WITH AIR SUSPENSION

The tried and tested axle technology with components from renowned manufacturers ensures a longer service life and high cost-effectiveness.

- » Maximum steering angle 45°
- » Axle stroke 200 mm
- » Loading height 785 mm



KNUCKLE TYPE STEERING AXLE AXLE WITH HYDRAULIC AXLE COMPENSATION

This robust axle technology enables a longer service life and high vehicle availability. The axle stroke is operated hydraulically and guarantees high lateral stability with large and heavy loads.

- » Maximum steering angle 45°
- » Axle stroke 260 mm
- » Loading height 795 mm



CHALLENGE ACCEPTED

The largest variety of loads, for example this soil stabilizer with a dead weight of 32 t, can be transported effortlessly with our semi lowloaders with forced steering.



STZ-L | STZ-H | »MPA« UP TO ANY TASK



LOW MAINTENANCE
VEHICLE DESIGN

LOW
TIRE WEAR

COMPREHENSIVE
ACCESSORIES








YOUR BENEFITS

- ✓ Bend-stiffened and robust vehicle frame
- » Reliability and durability
- ✓ Continuous steel loading platform with anti-slip coating
- » Flexible loading capability with higher working safety
- ✓ Proven and robust Goldhofer steering system
- » Low maintenance costs and reduced tire wear



TECHNICAL FEATURES

- + Tires
(only for STZ-L) 245/70 R 17,5
205/70 R 17,5
- + Vehicle width
STZ-L | STZ-H 2,550 mm/2,750 mm/3,000 mm
»MPA« 2,550 mm/2,750 mm
- + Axle spacing 1,360 mm/1,510 mm

Gooseneck	Front bogie (only for »MPA«)	Extension stages	Rear bogie
			
<ul style="list-style-type: none"> + Fifth wheel load 20-35 t + Swing clearance radius 2,100-2,800 mm + Fixed/hydraulic + Center beam, Outside position beams 	<ul style="list-style-type: none"> + Number of axles 2-3 	<ul style="list-style-type: none"> + Fixed, 1 or 2 	<ul style="list-style-type: none"> + Width excavator trough* STZ-L: 674 mm/874 mm/1,024 mm STZ-H: 674 mm/874 mm/1,024 mm »MPA«: 604 mm/804 mm + Number of axles STZ-L: 2-6 STZ-H: 3-8 »MPA«: 2-8

*Depending on vehicle width

TECHNICAL DIFFERENCES



STZ-L

- + Axle load (depending on country-related regulations) 10-12 t at 80 km/h
- + Axle load (technical) 15.6 t at 20 km/h
- + Loading height 785 mm/695 mm**
- + Axle stroke 200 mm
- + Maximum steering angle 45°



STZ-H

- + Axle load (depending on country-related regulations) 10-12 t at 80 km/h
- + Axle load (technical) 15.6 t at 20 km/h
- + Loading height 795 mm
- + Axle stroke 260 mm
- + Maximum steering angle 45°



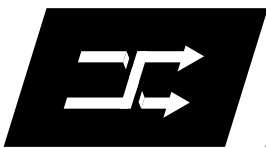
»MPA«

- + Axle load (depending on country-related regulations) 12 t at 80 km/h
- + Axle load (technical) 15.6 t at 20 km/h
- + Loading height 785 mm
- + Axle stroke 350 mm
- + Maximum steering angle 60°

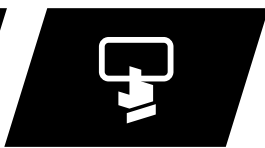
**Depending on tires



STZ-L | »MPA« WITH WHEEL RECESS FLEXIBILITY COUNTS



FLEXIBLE USE OF THE
LOADING PLATFORM



SIMPLE
OPERATION



PRACTICAL
LASHING CONCEPT





SEMI LOWLOADER WITH WHEEL RECESS



YOUR BENEFITS

- ✓ Varied application possibilities for the most different loads
- » Increased flexibility in action
- ✓ Low excavator trough deck and low wheel recesses
- » Lowest loading heights to fulfill the most stringent height guidelines
- ✓ Intelligent system for covering the recesses
- » Reduced set-up time for the most varied loads



TECHNICAL FEATURES

- + Axle load
(depending on country-related regulations) 10-12 t at 80 km/h
- + Tires 245/70 R 17,5
(only for STZ-L) 205/70 R 17,5
- + Vehicle width 2,550 mm/2,750 mm
- + Axle spacing 1,360 mm

Gooseneck

Bogie with wheel recess



- + Fifth wheel load 20-26 t
- + Swing clearance radius 2,100-2,800 mm
- + Fixed
- + Center beam, Outside position beams

- + Width excavator trough*
STZ-L: 674 mm/874 mm
»MPA«: 604 mm/804 mm
- + Number of axles 3-5

*Depending on vehicle width

TECHNICAL DIFFERENCES



STZ-L WITH WHEEL RECESS

- + Axle load (technical) 15.6 t at 20 km/h
- + Loading height 785 mm/695 mm**
- + Axle stroke 200 mm
- + Maximum steering angle 45°



»MPA« WITH WHEEL RECESS

- + Axle load (technical) 15.6 t at 20 km/h
- + Loading height 785 mm
- + Axle stroke 350 mm
- + Maximum steering angle 60°

**Depending on tires

STZ-L | STZ-H | »MPA«

WHEEL RECESSED VEHICLES

ACCESSORIES AND OPTIONS



GENERAL ACCESSORIES	+ Knorr "TIM"/Wabco "Smartboard"
	+ "easyCONTROL" remote steering
	+ »SmartControl«
	+ Wide load marker boards
	+ Storage boxes under the loading platform
GOOSENECK	+ Working lights
	+ Lift axle
	+ Spare wheel carrier
	+ High front wall
	+ Sidewalls
LOADING PLATFORM	+ Premium tool box
	+ Loading ramp
	+ Cable winch
	+ Stowage aids for accessories
	+ Electrohydraulic or diesel power pack
REAR	+ Long material trestle, stake pocket strip
	+ Outriggers
	+ Threaded bushes
	+ Load-securing trestle
	+ Excavator crawler deck
	+ Sliding table
	+ Insertable wheel recesses
	+ Various rear designs, suspension rail
	+ Hydraulic ramp sideshift
	+ Climbing pads
	+ Mechanical/hydraulic landing legs
	+ Detachable ramps
	+ Ramps in a variety of widths, lengths and coverings

STZ-L | »MPA« WITH WHEEL RECESS

TECHNICAL DATA



TECHNICAL DATA

	STZ-L WITH WHEEL RECESS	»MPA« WITH WHEEL RECESS
Axle load <i>(depending on country-related regulations)</i> <i>(technical)</i>	10-12 t at 80 km/h 15.6 t at 20 km/h	10-12 t at 80 km/h 15.6 t at 20 km/h
Fifth wheel load	20-26 t	20-26 t
Loading height	785 mm ^[1] 695 mm ^[2]	785 mm
Axle stroke	200 mm	350 mm
Tires	245/70 R 17,5 ^[1] 205/70 R 17,5 ^[2]	245/70 R 17,5
Vehicle width	2,550 mm 2,750 mm	2,550 mm 2,750 mm
Axle spacing	1,360 mm	1,360 mm
Maximum steering angle	45°	60°
Width excavator excavator trough*	674 mm 874 mm	604 mm 804 mm
Number of axles	3-5 axles	3-5 axles
Surface platform refinement	Durability ensured with high-quality finish with zinc-dust base coat	

^[1] 245/70 R 17,5 tires ^[2] 205/70 R 17,5 tires

*Depending on vehicle width



STZ-L | »MPA« WITH WHEEL RECESS

STZ-L | STZ-H | »MPA« TECHNICAL DATA



TECHNICAL DATA

	STZ-L	STZ-H	»MPA«
Axle load <i>(depending on country-related regulations)</i> <i>(technical)</i>	10-12 t at 80 km/h 15.6 t at 20 km/h	10-12 t at 80 km/h 15.6 t at 20 km/h	12 t at 80 km/h 15.6 t at 20 km/h
Fifth wheel load	20-35 t	20-35 t	20-35 t
Loading height	785 mm ^[1] 695 mm ^[2]	795 mm	785 mm
Axle stroke	200 mm	260 mm	350 mm
Tires	245/70 R 17,5 ^[1] 205/70 R 17,5 ^[2]	245/70 R 17,5	245/70 R 17,5
Vehicle width	2,550 mm 2,750 mm 3,000 mm	2,550 mm 2,750 mm 3,000 mm	2,550 mm 2,750 mm
Axle spacing	1,360 mm/1,510 mm	1,360 mm/1,510 mm	1,360 mm/1,510 mm
Maximum steering angle	45°	45°	60°
Width excavator excavator trough	674 mm 874 mm 1,024 mm	674 mm 874 mm 1,024 mm	604 mm 804 mm
Number of axles	2-6	3-8	2-11
Surface platform refinement	Durability ensured with high-quality finish with zinc-dust base coat		

^[1] 245/70 R 17,5 tires ^[2] 205/70 R 17,5 tires

*Depending on vehicle width



STZ-L | STZ-H | »MPA«

GOLDHOFER AKTIENGESELLSCHAFT

Donaustrasse 95, 87700 Memmingen/Germany
Telephone: +49 8331 15-0, Fax: +49 8331 15-239
Web: www.goldhofer.com, E-Mail: info@goldhofer.com

GOLDHOFER INC. | FLITELINE, LLC

7401 Riviera Boulevard, Miramar, FL 33023, USA
Telephone: +1 954 433 5617, Fax: +1 954 433 5445
Web: www.goldhofer.com, E-Mail: info@goldhofer.com
Web: www.flitelineusa.com, E-Mail: info@flitelineusa.com

SALES

Telephone Sales Europe: +49 8331 15-341
Telephone Sales International: +49 8331 15-342
E-Mail: sales-transporttechnology@goldhofer.com

SERVICES AND SPARE PARTS

Telephone: +49 8331 15-400, Fax: +49 8331 15-247
Emergency Hotline: +49 172 837 61 65
E-Mail: service-transporttechnology@goldhofer.com

MADE FOR YOUR MISSION